

USC School of Dramatic Arts

PRESENTS

Working A Musical

From the book by Studs Terkel
Adapted by Stephen Schwartz and Nina Faso
Localized format conceived by Daniel C. Levine for ACT of CT

Songs by Craig Carnelia, Micki Grant, Lin-Manuel Miranda, Mary Rodgers and Susan Birkenhead, Stephen Schwartz, James Taylor

CAST (in alphabetical order)

Lydia Berckley
She/Her | BFA Musical Theatre
Sophomore

Monty Boxer
He/Him | BFA Musical Theatre
Sophomore

Jenny Grennan
She/Her | BFA Musical Theatre
Sophomore

Kamalani Hanuna-Siqueira
She/Her | BFA Musical Theatre
Sophomore

Emma Kata
They/Them | BFA Musical Theatre
Sophomore

Lucas Kwan
He/Him | BFA Musical Theatre
Sophomore

Sabrina Munro
She/Her | BFA Musical Theatre
Sophomore

Sammy Parsons
He/Him | BFA Musical Theatre
Sophomore

Avery Rehl
She/Her | BFA Musical Theatre
Sophomore

Alex Benjamin Weber
He/Him | BFA Musical Theatre
Sophomore

Janelle Wong
She/Her | BFA Musical Theatre
Sophomore

SCENIC & PROJECTION DESIGN

Austin Mitchell
He/Him | BA Theatre, Emphasis in Design
Junior

COSTUME DESIGN

Benjamin Williams
He/Him | BFA Theatrical Design
Junior

LIGHTING DESIGN

Lucas Cruz
He/Him | BA Theatre, Emphasis in
Theatrical Design/ BA Political Science
First Year

SOUND DESIGN

Richie Nickel
He/Him | BFA Sound Design
Junior

ORCHESTRATION
Alex Lacamoire

TECHNICAL DIRECTOR
Duncan Mahoney

ASSISTANT DIRECTOR
Runhe "Rebecca" Yu
She/Her | BA Theatre Senior

PRODUCTION STAGE MANAGER
Cameron Eyanson
She/Her | BFA Stage Management
First-Year

Directed by **Anita Dashiell-Sparks**
Music Direction by **Marty Austin Lamar** Choreography by **Shannon Johnson Grayson**

This program will be presented without an intermission

Please be advised that this production includes the use of a firearm, discussions of workplace discrimination (sexism, racism), references to mental health and workplace stress, triggering imagery, and themes related to economic hardship and social class.

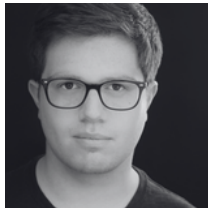
WORKING is presented through special arrangement with Music Theatre International (MTI). www.mtishows.com
Any video and/or audio recording of this production is strictly prohibited.

April 16-19, 2026 | McClintock Theatre

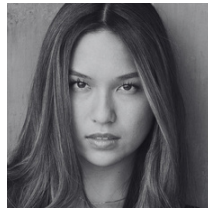
CAST



Lydia Berckley
Sharon, Woman in Cubicle



Monty Boxer
Al, Conrad, Frank, Mike, Tom



Jenny Grennan
Rose, Another Woman in Cubicle, Man 1, Woman 1



Kamalani Hanuna-Siqueira
Terry, Maggie, Charlie



Emma Kata
Roberta, Joe, Eddie, Maggie



Lucas Kwan
Anthony, Raj, Eddie, Man in Cubicle



Sabrina Munro
Grace, Ralph



Sammy Parsons
Mike, Rex, Frank, Utkarsh, Man 2, Woman 2



Avery Rehl
Amanda, Candy, Dolores



Alex Benjamin Weber
Freddy, Frank, Allen, Man Wearing Headphones in Cubicle, Lead Man



Jenelle Wong
Kate, Theresa

ADDITIONAL PRODUCTION STAFF

Assistant Stage Manager **Aliza Shear** | Company Manager **Hannah Baker** | Supertitle Designer & Operator **Olivia Souter**
Production Manager & Lighting Mentor **Tony Shayne** | Assistant Choreographer **Neta Sánchez**
Interim Technical Theatre Manager **Shannon Barondeau** | Sound Engineer **Richie Nickel**
Technical Director **Duncan Mahoney** | Properties Manager **Brittany White**
Wardrobe Supervisor **Kalālapa Winter** | Costume Assistant **Chloe Phelps**
Stage Management Mentor **Domenica Diaz** | Scenic & Projection Design Mentor **Tom Buderwitz**
Sound Mentor & Sound Engineer **Phil Allen** | Costume Design Mentors **Samantha Jones, Ann Closs-Farley**
Scenic Painter **Jazmin Lopez** | Crew **Mia Clements, Finn Deeney, Ava DeJong, Lucia Jimenez, Philip Leon, Max Rudelman, Hope Songer, Emily Weigus**

Special Thanks: Duck Brown, Imogen Jeffers, Auburn D'artell, Mia Murillo, and Caitlyn Perkins

Music Credits "A Very Good Day" Music and Lyrics by Lin-Manuel Miranda; "All the Livelong Day" Music and Lyrics by Stephen Schwartz (with acknowledgments to Walt Whitman); "Brother Trucker" Music and Lyrics by James Taylor; "Cleanin' Women" Music and Lyrics by Micki Grant; "Delivery" Music and Lyrics by Lin-Manuel Miranda; "Fathers and Sons" Music and Lyrics by Stephen Schwartz; "If I Could' ve Been" Music and Lyrics by Micki Grant; "It's An Art" Music and Lyrics by Stephen Schwartz; "Joe" Music and Lyrics by Craig Camelia; "Just a Housewife" Music and Lyrics by Craig Camelia; "Millwork" Music and Lyrics by James Taylor; "Nobody Tells Me How" Lyrics by Susan Birkenhead, Music by Mary Rodgers; "The Mason" Music and Lyrics by Craig Camelia; "Something to Point To" Music and Lyrics by Craig Camelia; "Lovin' Al" Music and lyrics by Micki Grant; "Un Meior Dia Vendra" Music by James Taylor, Spanish lyrics by Graciela Daniele and Matt Landers

LAND ACKNOWLEDGEMENT

USC is built on the unceded land of the Tongva, Chumash and Kizh people. We at SDA acknowledge and honor the Tongva, Chumash and Kizh people/communities and wish to amplify that they are still here. We encourage everyone to find out whose ancestral land you live on and commit to our shared responsibility to be agents of change, and for each of us to consider our roles in reconciliation, decolonization and allyship.