



The Heidi Chronicles by Wendy Wasserstein
Bing Theatre | October 2-5, 2025

USC School of Dramatic Arts 25/26

USC School of Dramatic Arts presents

The Heidi Chronicles

By **Wendy Wasserstein**

Directed by **Kirstin Eggers**

With

Siena Asencio Savannah Biscoe Pedro Coelho Sir William Cornwell
Elijah May Desrosiers Beck Han Coby Hawkins Kapil Kanagasabai
Madeline Magaña Alex Molesworth Sydnie Raé
Oscar Salvaggio Kalālapa Winter

Co-Scenic Design/Co-Projections Design

Bailey Youn *She/Her,*

BFA Theatrical Design Senior

Co-Scenic Design/Co-Projections Design

Austin Mitchell *He/Him,*

BA Theatre, Emphasis in Design Junior

Costume Design

Ellie Hermann *She/Her,*

BFA Theatrical Design Senior

Lighting Design

Yelena Babinskaya

Sound Design

Hal Sufrin *He/Him,*

BFA Sound Design Junior

Technical Director

Sophia Pollacchi *She/Her,*

BFA Technical Direction Junior

Production Stage Manager

Hannah Baker *She/Her,*

BFA Stage Management Senior

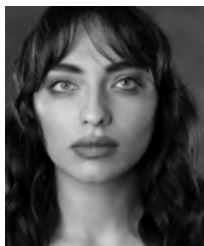
Bing Theatre October 2-5, 2025

Playwrights Horizons, New York City, first produced THE HEIDI CHRONICLES Off-Broadway in 1988 following a workshop production by the Seattle Repertory Theatre. Produced on Broadway by the Shubert Organization, Suntory International Corp., and James Walsh in association with Playwrights Horizons.

"Imagine" Written by John Lennon Published by Downtown Music Publishing LLC o/b/o Lenono Music (GMR); "It's In His Kiss" Written by Rudy Clark Published by Trio Music Company (BMI) o/b/o itself and By the Bay Music (BMI) Used by permission. All rights reserved.; "Respect" Words and Music by Otis Redding © Irving Music, Inc. (BMI) Not for broadcast transmission. All rights reserved. DO NOT DUPLICATE.; "You Send Me" Written and Performed by Sam Cooke Published by ABKCO Music, Inc. Courtesy of ABKCO Music & Records, Inc. www.abkco.com

THE HEIDI CHRONICLES is presented by special arrangement with Broadway Licensing, LLC, servicing the Dramatists Play Service collection. (www.dramatists.com)

CAST (In alphabetical order)



Siena Asencio *She/Her, Fran, Clara, Molly, Denise**
•BFA Acting for Stage & Screen Senior



Savannah Biscoe *She/Her, Betsy, Jill, Debbie, April**
•BFA Acting for Stage & Screen Senior



Pedro Coelho *He/Him, Peter** •BFA Acting for Stage & Screen Senior



Sir William Cornwell *He/Him, Dance DJ, Mark, Delivery Man, Makeup Artist, Columbia Editor**
•BFA Acting for Stage & Screen Senior



Elijah May Desrosiers *She/Her, Heidi***
•BFA Acting for Stage & Screen Senior



Beck Han *He/Him, Chris, Man with Umbrella, English Almost Fiancé, Steve, Lawyer with Curfew** •BFA Acting for Stage & Screen Senior



Coby Hawkins *He/Him, Scoop*** •BFA Acting for Stage & Screen Senior



Kapil Kanagasabai *He/Him, Scoop**
•BFA Acting for Stage & Screen Senior



Madeline Magaña *She/Her, Heidi** •BFA Acting for Stage & Screen Senior



Alex Molesworth *He/Him, Peter*** •BFA Acting for Stage & Screen Senior



Sydnie Raé *She/Her, Susan** •BFA Acting for Stage & Screen Senior



Oscar Salvaggio *He/Him, Hippie with Joint, Trinity Editor, Wedding DJ, TV Producer, Waiter, Ray**
•BFA Acting for Stage and Screen Senior



Kalālapa Winter *She/Her, Columbia Student, Becky, Woman in Art, Lisa, Sandra** •BFA Acting for Stage and Screen Senior

* Indicates role that will be performed 10/3 eve, 10/4 mat, 10/5 eve

** Indicates role that will be performed 10/2 eve, 10/4 eve, 10/5 mat

+ Indicates role that will be performed during all performances

The Heidi Chronicles

NOTE FROM THE ARTISTIC TEAM:

IN 1988, *The Heidi Chronicles* debuted off-Broadway, chronicling the life of a woman in the Baby Boomer generation. Born into the prosperous postwar era between 1946 and 1964, the Baby Boomers are the generation that held radical anti-war protests against Vietnam and became adults under Reaganomics. There are many similarities between the Baby Boomers and Gen Z. Both are generations that protested inequalities and affirmed that all people, regardless of age, gender, race, or sexuality, have the right to fulfill their potential. What holds us back from doing so is the constant overbearing weight of the patriarchy. *The Heidi Chronicles* can be interpreted as a feminist celebration or as a warning to never stop fighting for equality and justice. Like the characters in this play, we should not be lulled into a false sense of security and instead proudly work towards creating a future where everyone, regardless of sex or gender, feels “so f***** worthwhile.”■



THIS PERFORMANCE CONTAINS A 15-MINUTE INTERMISSION.

CONTENT WARNING

Please be advised that this production includes references to substance use (alcohol, marijuana), discussion of gender discrimination, harassment, fertility, outdated gender and social norms, adult themes and language, and smoking.

Additional *The Heidi Chronicles* Production Staff

Assistant Director **Addison Wozniczka** | *Choreographers* **Sydney Raé, Elijah May Desrosiers** | *Vocal/Dialect Coach* **Louis Colaianni** | *Intimacy Director* **Joy DeMichelle** | *Dramaturg* **Moriya Dichter** | *Fight Choreographer* **Beck Han** | *Production Deputies* **Oscar Salvaggio, Austin Mitchell** | *Assistant Stage Managers* **Sara Gutierrez, Quinn Healey, Alyssa Nazur** | *Production Manager* **Tony Shayne** | *Stage Management Mentor* **Scott Faris** | *Lead Props* **Meredith Ziegler** | *Lead Scenic Painter* **Mia Murillo** | *Scenic Mentor* **Takeshi Kata** | *Costume Assistant* **Kate Strausman** | *Wardrobe Supervisor* **Allie Rones** | *Costume Mentor* **Ann Closs-Farley** | *Assistant Lighting Designer* **Lucas Cruz** | *Programmer* **Mia Gomez** | *Associate Sound Designer* **Genevieve Perry** | *Production Mixer* **Grace Abdelnour** | *Production Engineer* **Sean Allinson** | *Sound Mentor* **Phil Allen** | *Assistant Technical Director* **Sev Krauss-McClurg** | *Technical Direction Mentor* **Duncan Mahoney** | *Technical Crew* **Piper Clurman, Siena Frederick, Jemma Handler, Alex Kerr, Charlotte Marchioli, Ava Morandi, Joshua Passmore, Zora Payne, Isaac Rodriguez, Grace Sutherland, Luke Swanson**

LAND ACKNOWLEDGMENT

USC is built on the unceded land of the Tongva, Chumash and Kizh people. We at SDA acknowledge and honor the Tongva, Chumash and Kizh people/communities and wish to amplify that they are still here. We encourage everyone to find out whose ancestral land you live on and commit to our shared responsibility to be agents of change, and for each of us to consider our roles in reconciliation, decolonization and allyship.

USC School of Dramatic Arts

DEAN

Emily Roxworthy

VICE DEAN

Lori Ray Fisher

ASSOCIATE DEANS

Professor of Theatre Practice Anita Dashiell-Sparks
(Chair of Performance, George Burns Professor of Theatre)

Professor Oliver Mayer

DISTINGUISHED PROFESSORS

Velina Hasu Houston
(Resident Playwright)

PROFESSORS

Sharon Marie Carnicke

Meiling Cheng

ASSOCIATE PROFESSORS

Luis Alfaro
(Director of MFA Dramatic Writing Program)

Alexandra Billings

Elizabeth Harper

Takeshi Kata

Stacy L. Smith

Sibyl Wickersheimer

ASSISTANT PROFESSORS

Esther K. Chae

Ann Closs-Farley
(Costume Shop Director)

Samantha C. Jones
(Associate Costume Shop Manager)

Melissa Treinkman

PROFESSORS OF THEATRE PRACTICE

Philip G. Allen
(Chair of Design, Director of Sound Design)

Brent Blair
(Director of Theatre & Social Change)

Kate Burton

Paula Cizmar

Louis Colaanni

Joseph Hacker

Duncan Mahoney
(Technical Director)

Natsuko Ohama

Michele Shay
(Interim Co-Director of BFA in Musical Theatre)

Stephanie Shroyer

David Warshofsky
(Director of MFA Acting, McKinlay Chair)

ASSOCIATE PROFESSORS OF THEATRE PRACTICE

Kathleen S. Dunn

Scott Faris
(Chair of Production & Stage Management,
Alice M. Pollitt Professor of Stage Management,
Interim Co-Director of BFA Musical Theatre)

Melinda C. Finberg

Laura Flanagan
(Director of Institute for Theatre & Social Change)

Rena M. Heinrich
(Chair of Critical Studies & Dramatic Writing)

Dan Shaner

Zachary Steel
(Director of Comedy, Chair of the Literary Committee)

ASSISTANT PROFESSORS OF THEATRE PRACTICE

Bayo Akinfemi
(Director of BA Acting Practicum)

Boni B. Alvarez

Kirstin Eggers

Stevie Johnson

S. Anindo Marshall

Noel Nichols

Tomm Polos

Tony Shayne

Judith Shelton

Rodney To

Tony Taccone

Paul Urcioli

ADJUNCT LECTURERS AND PART-TIME FACULTY

Jill Alexander, John Allis, Emily Alpren, Robert Bailey, Jenni Barber, Mia Barron, Ahmed Best, Mallory Birkrem, Randy Blair, Wayne Brady, Tom Buderwitz, Frank Catalano, Adam Chambers, Lee Shallat Chemel, Julián Joaquín Conde, Susan Dalian, Gregg T. Daniel, Debra De Liso, Amrita Dhaliwal, Gary Domasin, Ashley Eskew, Wayne Federman, Matthew Felten, Laurie Fisher, Lena Ford, Jared Gertner, Finola Hughes, Paul Hungerford, Kendall Johnson, Justin Key, Edgar Landa, Adam Lebowitz-Lockard, Jennifer Lin, Anthony Lucca, Nick Massouh, Kevin McCorkle, Robert Mohler, Amy O'Neal, Gabriella Santinelli, Sim Sarna, Jennifer Sarvas, Nathan W. Scheuer, Michael Schwartz, Sanjay Sharma, Tessa Slovis, Dana Solimando, Billy Thompson, Lindsay Torrey, Josette Wiggan, Sabina Zúñiga Varela

Emeriti Faculty: Don Llewellyn, Eve Roberts, Andy Robinson, Eric Trules, James Wilson

BOARD OF COUNCILORS

Michele Dedeaux Engemann

Founding Chair

Kourosh Gohar

Chair

Chris Andrews

Nnamdi Asomugha

Lorrie Bartlett

Lauren Booth

Connie Britton

Michael Chiklis

Rodric David

Michael Felix

Lori Furie

Steve Gersh

Joshua B. Grode

Grant Heslov

Gail Katz

Franklin Leonard

Alexander LoCasale

Jennifer Pate

Rik Reppe

Dean Emily Roxworthy

Cathy Sandrich Gelfond

Anthony Sparks

Danny Strong

Tracy Tutor

Paula Wagner

Noelle L. Wolfe

Bryan Zuriff

ALUMNI LEADERSHIP COUNCIL

Adrienne Visnic

Chair

Taylor Elizabeth Allen

Sarah Anne Bedo

Adam Blumenthal

Kate Cannova

Mona Chatterjee Raffle

John Coffey

David Fickas

Lorena Estefania Gonzalez

Kendall Johnson

Jaclyn Kalkhurst

Sean Lask

Elizabeth O'Connell

Tomm Polos

Michael Schwartz

Pranav Shah

John Villacorta

STAFF

ADMISSIONS & STUDENT SERVICES

Associate Dean Sergio Ramirez

Assistant Director of Admissions Ramón Valdez

Academic Advisor Aspen Cole

Office Manager Mabel Lopez

ADVANCEMENT

Associate Dean Sara Fousekis

Director of Advancement Kimberly Muhlbach

Advancement Coordinator Kathy Morgan

BUSINESS AFFAIRS

Interim Senior Business Officer John Digrado

Department Business Administrator

& Home Department Coordinator Crystal Balthrop

COMMUNICATIONS

Associate Dean Delphine Vasko

Graphic Designer Christopher Komuro

Video & Streaming Manager Joe Shea

DEANS' OFFICE

Director of Information Technology Prakash Shirke

Director of Internships & Special Programs Meghan Laughlin

Director of the Professional Development Center Debi Manwiller

Events Manager Jennifer Franco

Conservatory Coordinator & Director of the

Sparks Center for Community & Culture Chevaughan Dyer

Executive Assistant to the Dean & Vice Dean Nathalie Zuletta

PRODUCTION

Technical Theatre Manager Michael Latimer

Asst. Technical Theatre Manager Christopher Paci

Costume Shop Floor Manager Charlotte Stratton

SPX, Craft & Accessories Build Coordinator Timo Elliott

Properties Manager Brittany White

Sound Supervisor Sean Allinson

ABOUT THE SCHOOL

The USC School of Dramatic Arts fosters the talents of artist-scholars who are dramatically different — who are willing to imagine the future of the entertainment industry and bring it to life. Through an interdisciplinary, entrepreneurial education students develop the skills necessary to discover their unique voice and are exposed to diverse styles and multiple media. Students and recent alumni are supported by the School's unique Professional Development Center which offers career services and professionalization opportunities to help students establish and sustain successful careers as creators, performers and cultural innovators. For more information, visit dramaticarts.usc.edu.

Support tomorrow's creatives by donating today!

Your gift will help fund curriculum-enhancing programs to ensure this next generation of SDA artists is industry-ready for any screen or stage!



**Scan.
Donate.
Bravo!**

USC School
of Dramatic Arts

